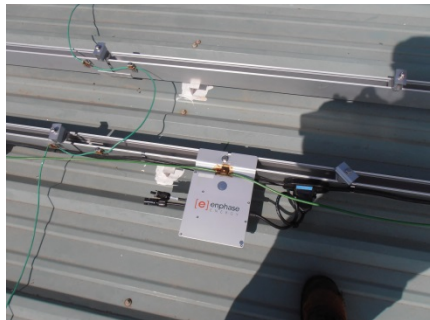


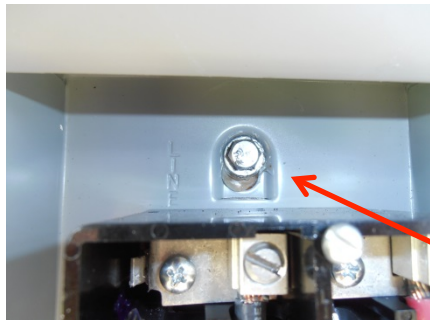
## 3D Builders and Design PV Installation



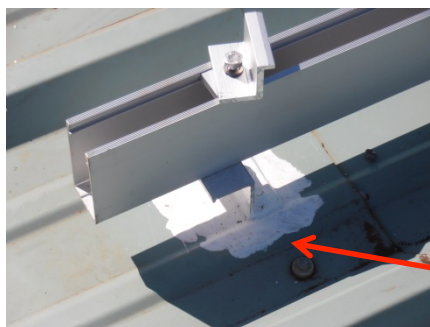
All conduits running between junction boxes and switch gear are plugged with duct seal putty. This reduces the possibility of humidity or critters migrating from device to device.



Exterior ground connections are made using insulated wire to prevent contact between 2 dissimilar metals. Where the wire is stripped it is coated with Scotchkote so that moisture cannot bridge the materials.



All exterior fasteners are stainless steel. All exterior fasteners are sealed with an exterior rated caulking compound as illustrated in the adjacent photos.



On nearly flat roofs, when the penetrations are sealed to specification, another layer of sealant is applied, such as the elastomeric coating shown in the adjacent photos.



All circuits are clearly labeled. Each PV system includes a lightning arrester, which protects the equipment in the event of a voltage spike. Non-stainless steel unpainted parts are coated with UV resistant clear enamel.

